

Low-Income Uninsured in South Carolina

Among SC's non-elderly (age 64 and under) (NE) in 2020, slightly more than **1 in 10** (13%) had **no health insurance**.



Among SC's more than 900,000 NE LIU, the rate of uninsurance was more than **2 in 10** (22%).

BY THE NUMBERS



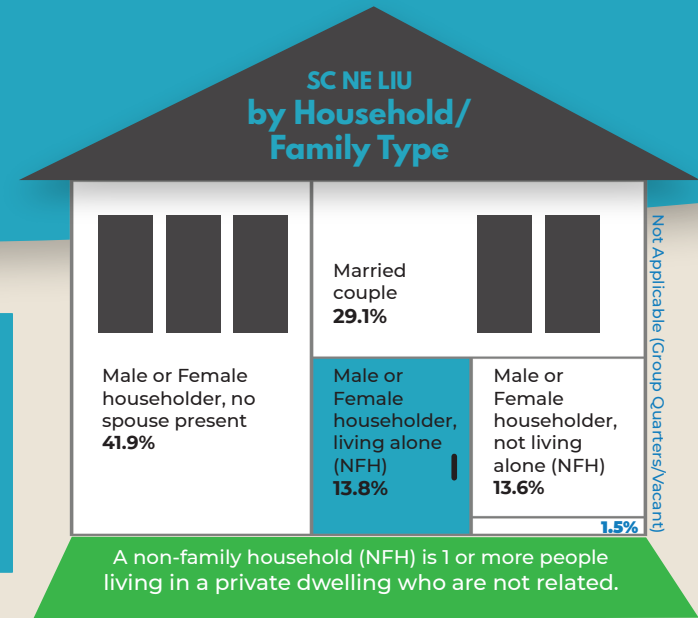
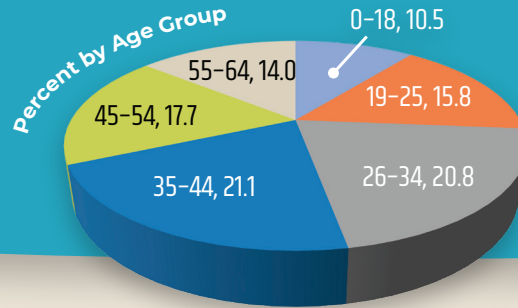
Low-income uninsured (LIU) are defined as those without health insurance coverage and with an annual income **less than 138% of the federal poverty level (FPL)**. <138% FPL is also the amount used as the income limit to qualify for Medicaid insurance in some states. The equivalent income dollar amounts – as SC examples in 2022 – are **\$18,754** for an individual and **\$38,295** for a family of four.



Population Characteristics



Other 10.1%
At **54.2%**, **White** was the largest group by race.
Black 35.7%



People who identified as "Hispanic/Latino" are estimated to be **18.8%** of the NE LIU in South Carolina as of 2020.

of attainment made up the largest percentages within the group.
Those with the lowest levels of attainment made up the largest percentages within the group.
36.5% had a high school degree
By Educational Attainment
35.8% had less than a high school diploma.

Those with some college, an associate's degree, bachelor's degree or higher, were together the smallest portion (26.4%) of the NE LIU in SC.

More than **28,000** of the NE LIU individuals in SC had a disability.

About **11%** of the NE LIU were unemployed.

There was an approximately
MALES: 103,590
FEMALES: 100,706
equal distribution in the NE LIU, by sex.

Notes:

Sample dollar amounts calculated from aspe.hhs.gov/topics/poverty-economic-mobility/poverty-guidelines.

Data Source: American Community Survey (ACS) 5-Year Estimates Public Use Microdata Sample (PUMS) – 2020

©2022 The University of South Carolina Institute for Families in Society, All Rights Reserved. Developed under contract to the South Carolina Department of Health and Human Services