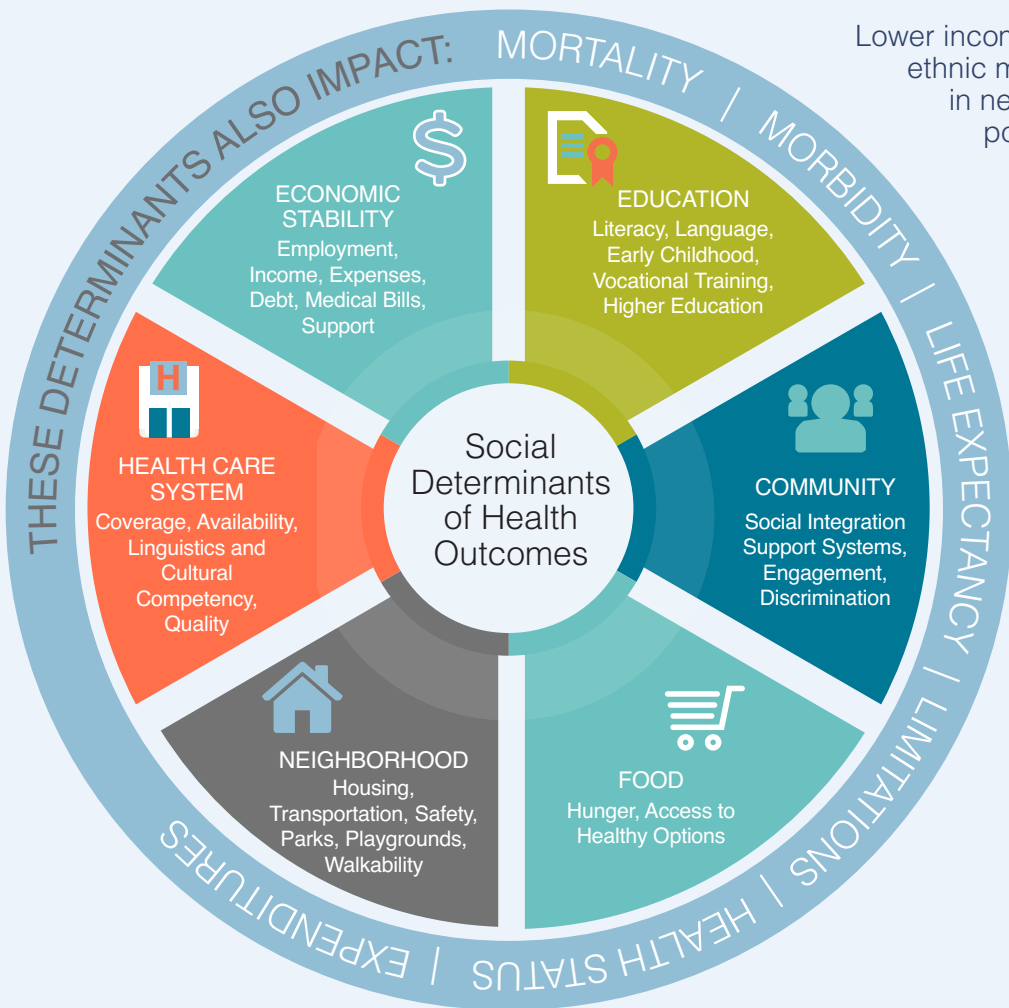


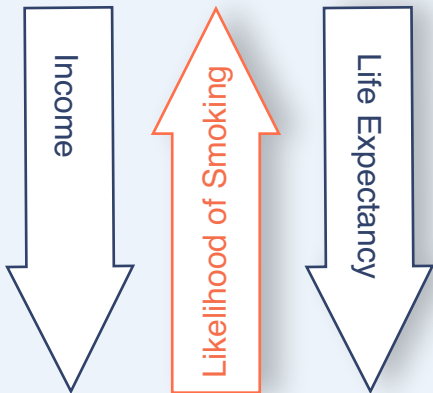
Social and Economic Factors That Impact Health



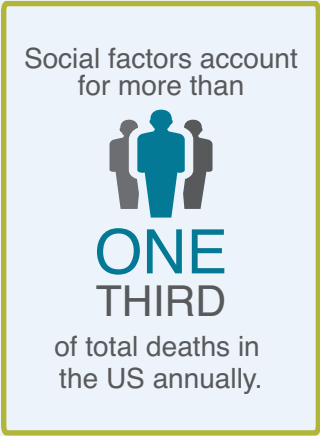
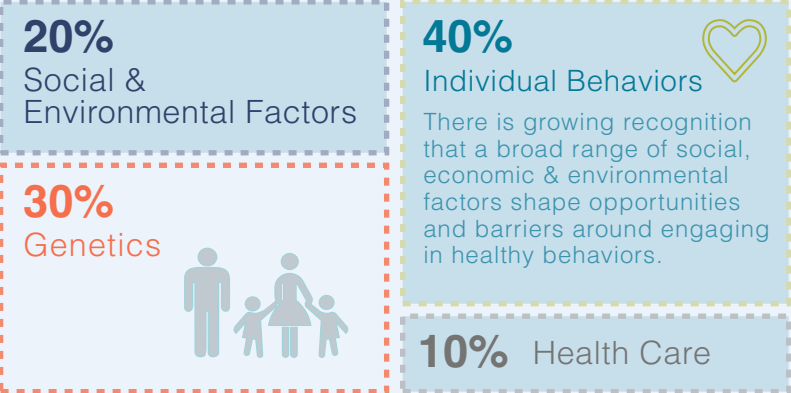
Lower income members of racial and ethnic minorities are more likely to live in neighborhoods with concentrated poverty than are their lower income White counterparts.



LOWER EDUCATIONAL ATTAINMENT



IMPACT OF RISK FACTORS ON PREMATURE DEATH



Children born to parents who have not completed high school are more likely to live in an environment that poses barriers to health.

